



# Yiwu **Swiftpath** Global Trade Co., Ltd

China



Chinese Registered  
Company



Uniform Social Credit Code:  
91330782MAENQE310L



Established:  
25 June 2025



Yiwu, Zhejiang, China

China registered industrial execution partner governing specification path, certificate integrity, inspection discipline and dispatch release for critical equipment.

## Critical Industrial Sectors

Focused industrial coverage for high-standard global buyers.



1. Power Generation Systems



2. Generation-Linked Substations



3. Grid & Transmission Support



4. Hazardous & Critical  
Industrial Packages



5. Shutdown & Replacement  
Requirements



[www.swiftpathglobal.com](http://www.swiftpathglobal.com)



# WHAT SWIFTPATH CONTROLS

A disciplined execution model for critical equipment packages.



## 1 Equivalent Intelligence

Technically acceptable alternative routes, not random substitutes.



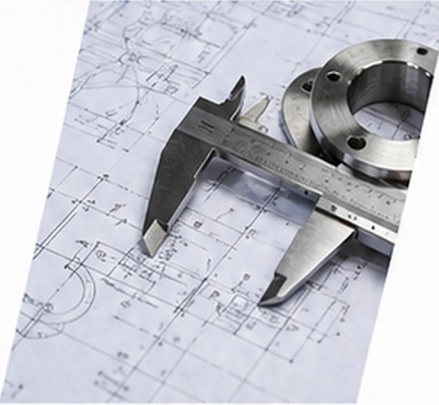
## 2 OEM Route Control

Clear manufacturer path and accountable supply route.



## 3 Specification Conformity

Parameter-level fit to application, drawing and standard.



## 4 Certificate Integrity

Documents checked against the real item and approval need.



## 5 New Stock Assurance

No refurbished, surplus or unclear-origin release.



## 6 Multi-Brand Package Execution

Controlled packages across 100+ industrial brands.



## 7 Export & LC Discipline

Shipment and bank documents aligned before release.



## 8 Import Readiness Support

Packing, marking and file alignment for buyer receipt.





# EQUIVALENT INTELLIGENCE

Approved alternative routes, not random substitutes.

We evaluate equivalent options only when the technical, certificate and approval path can survive buyer review.

1

## Original Requirement

Capture exact technical, compliance and performance requirements.



2

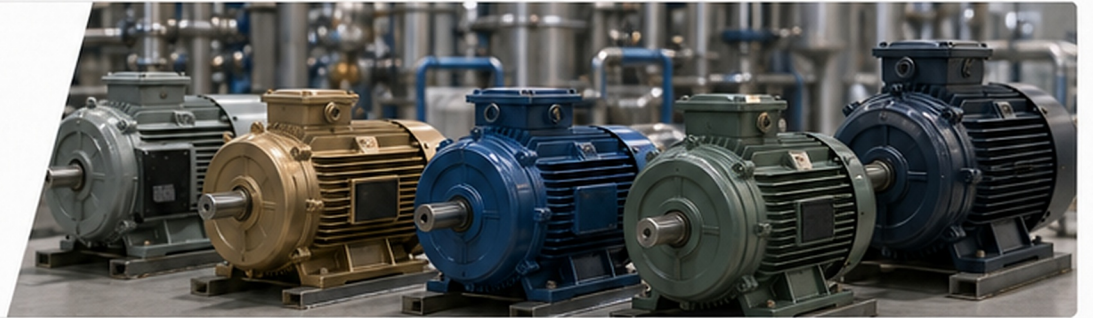
## Parameter Mapping

Align critical parameters and define acceptable ranges.

3

## Equivalent Route Evaluation

Assess compliant alternatives for technical fit, risk and lifecycle impact.



4

## Approval-Ready Recommendation

Deliver a fully documented recommendation that's ready for buyer review.



Motors



Valves



Instruments



Cables





# OEM ROUTE CONTROL

Real source visibility before commitment.

We control the manufacturer route so the buyer does not depend on blind reseller chains or unsupported factory claims.



**1**  
FACTORY  
IDENTITY



**2**  
PRODUCT  
FAMILY FIT



**3**  
PRODUCTION  
CAPABILITY



**4**  
ACCOUNTABLE  
SUPPLY ROUTE

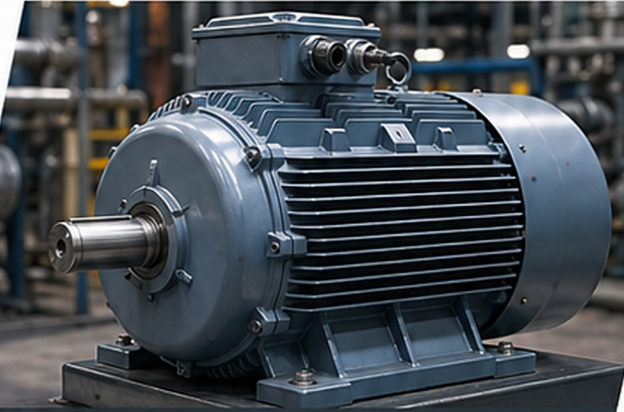


# SPECIFICATION CONFORMITY

We match operating parameters, not just item names.



The requirement is validated at parameter level against application, drawing and standard.



## MOTOR



Voltage



Frequency



Insulation Class



IP Rating



IE Efficiency

2

## VALVE



Size



Pressure Class



Material



End Connection



Leakage Class



3

## CABLE



Voltage Grade



Conductor



Insulation



Armour



Standard

4

## INSTRUMENT



Range



Output



Accuracy



Process Connection



Ex Protection





# CERTIFICATE INTEGRITY

Documents must support the actual item.

We test the document path, not only the document appearance.



CE

TUV

IEC

ATEX

CoC

MTC



1. Model Verification



2. Batch & Serial Trace



3. Standard Alignment



4. Approval Pack



Model match



Batch trace



Standard match



Test file alignment





# NEW STOCK ASSURANCE

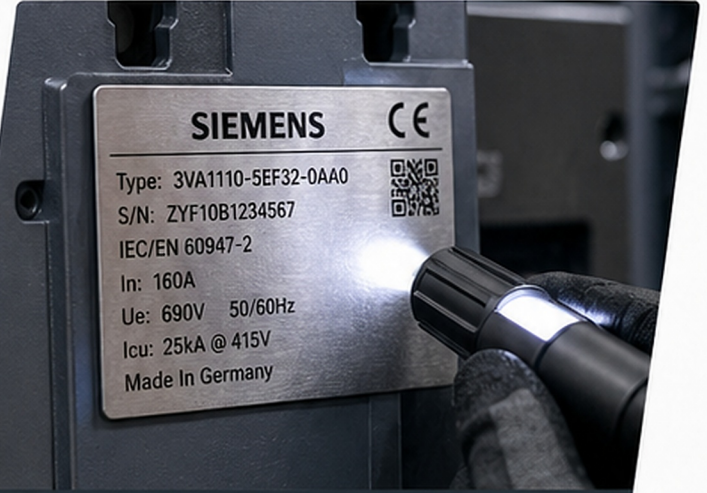
No refurbished, no surplus, no unclear-origin release.



Release is controlled only after stock condition, packing condition and identity checks are aligned.



1. Sealed stock



2. Nameplate verification



3. Packing integrity



4. Warehouse release check



No refurbished



No mixed batch



No unclear origin





# MULTI-BRAND PACKAGE EXECUTION



**100+**  
industrial  
brand routes

One disciplined package across multiple equipment families.

Complex RFQs are consolidated into controlled packages with individual specification, document and dispatch paths.



## Mechanical

- Pumps & Compressors
- Valves & Actuators
- Tanks & Pressure Vessels



## Electrical

- Transformers
- Switchgear & MCC
- Cables & Accessories



## Instrumentation

- Transmitters & Sensors
- Control Valves
- Analyzers & Controllers



## Utility & Safety

- HVAC & Ventilation
- Fire Protection
- Safety Systems





# EXPORT & LC DISCIPLINE

Technical supply should not fail at bank or shipment stage.



Export documents, packing files and LC-facing details are aligned before shipment release.

**01 Commercial Invoice**  
Accurate values, HS codes and terms confirmed.

**02 Packing List**  
Detailed packing information and marking verified.

**03 Certificate of Origin**  
Origin documentation prepared per LC requirements.

**04 BL/AWB Draft**  
Draft checked for accuracy before final issuance.

**05 LC Terms Check**  
All LC terms matched and documents pre-validated.

**LC TERMS CHECKLIST**

- Document Type
- Quantity
- Price & Currency
- Shipment Terms
- Packing & Marking
- Latest Shipment Date
- Port of Loading
- Port of Discharge
- Other Conditions





# RELEASE TO RECEIPT

Packing, marking and file alignment for buyer-side receipt.

The package is prepared for receiving, review and clearance readiness before release.



## Packing readiness

Packages secured to protect product integrity through transit.



## Marking discipline

Clear marks and labels ensure accurate handling and identification.



## Document file alignment

Documents compiled and verified for smooth buyer-side review.



## Receipt support

We support the buyer through confirmation and clearance until receipt.



**Yiwu Swiftpath  
Global Trade Co., Ltd**

Chinese Registered  
Company



Uniform Social Credit Code:  
91330782MAENQE310L



Established:  
25 June 2025



Yiwu, Zhejiang



[www.swiftpathglobal.com](http://www.swiftpathglobal.com)



RFQ, drawing and  
certificate-based  
inquiries welcome.